



# Liga Florilor MOL 24-25



14. round

Match Team Statistics  
Match No.

**CSM Corona Brasov 27 - 27 CS Minaur Baia Ma**  
(15 - 11) (12 - 16)

19.1.2025. 17:30  
Attendance: 1000  
Sala Sporturilor Dumitru  
Popescu Colibasi

Referees: Mihai Parvu (ROU) / Radu Mihai Potirniche (ROU)

## CSM Corona Brasov

Players		Goals / shots									Attack					Def.			Penalties				TP		
#	Surname and name	S	Tot.	%	9m	6m	Wing	7m	FB	Brk.	LD	As.	PC	E7	E2	TF	St.	C7	Bik	YC	2m	R		B	
1	CURMENT Bianca Tomina																								0:02
9	ZIVKOVIC Jelena	S	4/9	44	2/7					2/2		1		2	1	5	1	1							45:44
10	CAVLOVIC Itana	S														2		1			2				28:27
11	VAN KREIJ Harma Anna Cornelia	S	0/1	0	0/1											2		1							49:55
12	GUDELJ Anica	S										1													55:52
13	VACARIU Ana-Maria																								5:59
14	NEAGU Marilena Alexandrina																								
16	RADOI Raluca Nicoleta																								0:37
17	VOICA Elena Bianca														1										12:23
19	DUMITRASCU Alexandra Gabriela		3/3	100			3/3											1							42:36
20	IORDACHI Cristina Diana	S	0/1	0			0/1														1				17:38
24	BOICIUC Alisia Lorena		3/6	50	1/3					2/3							1								41:26
28	LASM Laura Anais Meliane	S	7/11	64	5/8					2/3						1	2								46:10
33	SLEZAK KRPEZ Katarina	S	9/11	82			3/5	2/2	4/4							2	1								57:57
44	MUNTEANU-FLORIAN Flavia Maria																								
89	BURCEA ZAMFIR Cristina Florina		1/2	50	1/2										2									1	15:14
	Team / bench																				1	1			
	UKUPNO		27/44	61	9/21	0/0	6/9	2/2	4/4	6/8	0/0	2	0	2	1	15	5	4	0	1	5	0	0		

Goalkeepers		Saves / shots								
#	Surname and name	Tot.	%	9m	6m	Wing	7m	FB	Brk.	LD
1	CURMENT Bianca Tomina									
12	GUDELJ Anica	7/31	23	4/9	0/8	2/7		0/2	1/5	
16	RADOI Raluca Nicoleta	1/4	25		0/1		1/3			
	TOTAL	8/35	23	4/9	0/9	2/7	1/3	0/2	1/5	0/0

Coach: **Bogdan George Burcea**

Number of attacks: 56, Efficiency: 48%, Average Duration: 32.28 seconds

### Attack by type of defense

	Shots	9m	6m	Wing	TF	E7	E2
On def. 6-0	21/38	9/21	0/0	6/9	15	2	1
Fastbreak	4/4				0	0	0

### Defense by type

	Total	9m	6m	Wing	Stl.	C7	2m
Def. 6-0	23/36	5/13	9/9	5/9	5	4	5
Fastbreak	2/2				0	0	0

### Attack with superiority / minority / goalkeeper out

	Attack				Reaction		
	Att.	Eff.	Shots	TF	FB	LD	Tot.
7 on 6 (GK out)	4	75%	3/3	1	0/0	0/0	0/0
6 on 6 (GK out)	6	83%	5/5	1	0/0	0/0	0/0
6 on 5 (GK out)	2	50%	1/1	1	0/0	0/0	0/0
6 on 6	42	43%	18/31	11			
5 on 6	1	0%	0/1	0			
5 on 5	1	0%	0/0	1			

Player superiority / GK out counted at the end of attack (in case it changes during attack)

### Defense with superiority / minority / goalkeeper out

	Attack				Reaction		
	Att.	Eff.	Shots	TF	FB	LD	Tot.
7 on 6 (GK out)	3	33%	1/2	1	0/0	0/0	0/0
6 on 6	42	50%	21/30	12			
7 on 5 (GK out)	1	100%	1/1	0	0/0	0/0	0/0
6 on 5 (GK out)	1	0%	0/0	1	0/0	0/0	0/0
6 on 5	8	50%	4/6	2			

Numbers show attacking numbers of opponent. Lower efficiency of opponent means better defense of this team

# Jersey number Tot. Total shooting 6m 6m (line) shooting 9m 9m shooting Wng Wing shooting FB Fastbreak sh. 7m 7m penalty sh.  
Brk. Breakthrough sh. LD Long distance sh. As. Assists PC Pass clear chance E7 Earned 7m pen. TF Technical faults St. Steals  
2m 2m punishments C7. Committed 7m E2 Earned 2m pun. YC. Yellow cards R/B Red/Blue cards Blk. Blocks S Starting Line-up

Handball statistics and livescore by Toma-soft ltd (www.toma-soft.hr)



# Liga Florilor MOL 24-25



14. round

Match Team Statistics  
Match No.

**CSM Corona Brasov 27 - 27 CS Minaur Baia Ma**  
(15 - 11) (12 - 16)

19.1.2025. 17:30  
Attendance: 1000  
Sala Sporturilor Dumitru  
Popescu Colibasi

Referees: Mihai Parvu (ROU) / Radu Mihai Potirniche (ROU)

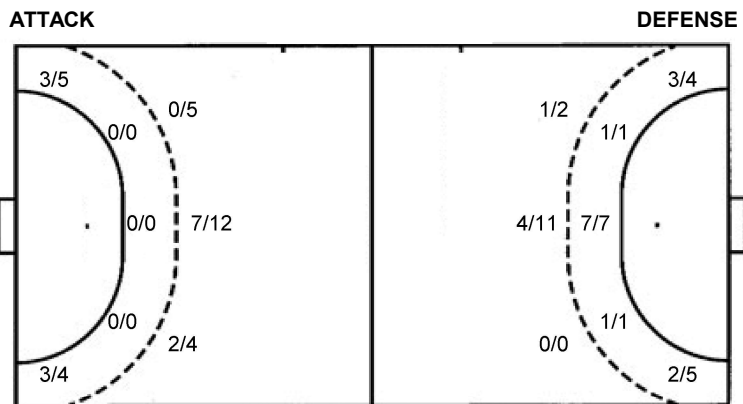
## Shot distribution by player

<b>9 J. Zivkovic</b> 2/2 0/1 0/1 0/1 0/1 1/2 1/1	<b>10 I. Cavlovic</b> 0/0 0/0 0/0 0/0 0/0 0/0 0/0 0/0 0/0	<b>11 H. Van Kreijl</b> 0/0 0/0 0/0 0/0 0/0 0/0 0/1 0/0 0/0	<b>13 A. Vacariu</b> 0/0 0/0 0/0 0/0 0/0 0/0 0/0 0/0 0/0	<b>14 M. Neagu</b> 0/0 0/0 0/0 0/0 0/0 0/0 0/0 0/0 0/0	<b>17 E. Voica</b> 0/0 0/0 0/0 0/0 0/0 0/0 0/0 0/0 0/0	<b>19 A. Dumitrascu</b> 0/0 0/0 0/0 0/0 0/0 0/0 0/0 0/0 3/3
<b>20 C. Iordachi</b> 0/0 0/0 0/0 0/0 0/0 0/0 0/1 0/0 0/0	<b>24 A. Boiciuc</b> 0/0 0/0 1/1 0/1 0/0 0/0 2/2 0/0 0/0 2 post	<b>28 L. Lasm</b> 0/0 1/1 0/0 0/1 0/0 0/0 2/2 0/0 4/4 2 post 1 block	<b>33 K. Slezak Krpez</b> 1/1 0/0 0/0 2/2 0/0 0/0 3/3 0/0 3/4 1 miss.	<b>44 F. Munteanu-Florian</b> 0/0 0/0 0/0 0/0 0/0 0/0 0/0 0/0 0/0	<b>89 C. Burcea Zamfir</b> 0/0 0/0 0/0 0/0 0/0 0/0 1/1 0/0 0/0 1 post	<b>TOTAL</b> 3/3 1/2 1/1 2/5 0/1 0/1 9/11 0/1 11/12 5 post 1 miss. 1 block

## Saves distribution goalkeepers

<b>1 B. Curment</b> 0/0 0/0 0/0 0/0 0/0 0/0 0/0 0/0 0/0	<b>12 A. Gudelj</b> 0/3 0/0 2/3 0/1 0/0 3/4 1/9 0/2 1/8	<b>16 R. Radoi</b> 0/0 0/0 0/0 0/0 0/0 0/0 0/0 0/0 1/4	<b>TOTAL</b> 0/3 0/0 2/3 0/1 0/0 3/4 1/9 0/2 2/12
--	--	---	--

## Shots by position



7m penalties 2/2  
Fastbreak 4/4  
Breakthrough 6/8  
Long dist. 0/0

7m penalties 2/4  
Fastbreak 2/2  
Breakthrough 4/5  
Long dist. 0/1

## Shooting statistics

Position	Goals	Sav.	Miss.	Post	Blk.	Total	%
Back (9m)	9	7	0	4	1	21	43
Line (6m)	0	0	0	0	0	0	0
Wing	6	2	1	0	0	9	67
7m penalties	2	0	0	0	0	2	100
Fastbreak	4	0	0	0	0	4	100
Breakthrough	6	1	0	1	0	8	75
<b>Total</b>	<b>27</b>	<b>10</b>	<b>1</b>	<b>5</b>	<b>1</b>	<b>44</b>	<b>61</b>

# Jersey number Tot. Total shooting 6m 6m (line) shooting 9m 9m shooting Wng Wing shooting FB Fastbreak sh. 7m 7m penalty sh.  
 Brk. Breakthrough sh. LD Long distance sh. As. Assists PC Pass clear chance E7 Earned 7m pen. TF Technical faults St. Steals  
 2m 2m punishments C7. Committed 7m E2 Earned 2m pun. YC. Yellow cards R/B Red/Blue cards Blk. Blocks S Starting Line-up



# Liga Florilor MOL 24-25



14. round

Match Team Statistics  
Match No.

**CSM Corona Brasov 27 - 27 CS Minaur Baia Mare**  
(15 - 11) (12 - 16)

19.1.2025. 17:30  
Attendance: 1000  
Sala Sporturilor Dumitru  
Popescu Colibasi

Referees: Mihai Parvu (ROU) / Radu Mihai Potirniche (ROU)

## CS Minaur Baia Mare

Players		Goals / shots										Attack					Def.			Penalties				TP	
#	Surname and name	S	Tot.	%	9m	6m	Wing	7m	FB	Brk.	LD	As.	PC	E7	E2	TF	St.	C7	Blk	YC	2m	R	B		
1	MIHIS Cristina																								17:59
2	IANASI Maria-Andreea																								6:35
6	GALINSKA Emilia Anna																								12:22
7	VUKAJLOVIC Aleksandra	S	0/1	0						0/1					1	1					1				28:15
8	DAMIAN Teodora Lavinia	S	1/1	100						1/1						2									12:37
10	QUINTINO RIBEIRO Jessica	S	3/6	50			2/4	1/2							1										31:24
13	GOMES DA COSTA Maria		1/1	100						1/1				2		1				1					17:25
15	ROMANIUC Denisa Roxana	S	1/1	100			1/1									1									16:34
21	WOLLER Fie		3/4	75			2/3		1/1					1							1				31:31
22	POPESCU Luciana-Andreea											1			1				1						15:56
28	CAZANGA Magda-Alfredo	S	3/8	38	2/7					1/1					1	4									39:49
33	LUNDBACK Amelia		4/7	57	3/6					1/1						3	3	1							41:22
37	TATAR Andrijana		4/5	80		2/2		1/1	1/1		0/1			1		1	1								27:15
53	DUMANSKA Yuliya	S														1									39:31
93	SPUGNINI SANTOME Alba Chiara	S	7/8	88		7/7		0/1							1	1									44:04
95	PAVLOVIC Katarina		0/1	0			0/1																		37:21
	Team / bench																								
	UKUPNO		27/43	63	5/13	9/9	5/9	2/4	2/2	4/5	0/1	1	0	4	4	16	4	2	1	1	1	0	0		

Goalkeepers		Saves / shots									
#	Surname and name	Tot.	%	9m	6m	Wing	7m	FB	Brk.	LD	
1	MIHIS Cristina	3/12	25	3/8		0/2	0/1		0/1		
53	DUMANSKA Yuliya	7/25	28	4/8		2/6	0/1	0/4	1/6		
	TOTAL	10/37	27	7/16	0/0	2/8	0/2	0/4	1/7	0/0	

Coach: **Andrei Popescu**

Number of attacks: 55, Efficiency: 49%, Average Duration: 34.39 seconds

### Attack by type of defense

	Shots	9m	6m	Wing	TF	E7	E2
On def. 6-0	23/36	5/13	9/9	5/9	16	4	4
Fastbreak	2/2				0	0	0

### Defense by type

	Total	9m	6m	Wing	Stl.	C7	2m
Def. 6-0	21/38	9/21	0/0	6/9	4	2	1
Fastbreak	4/4				0	0	0

### Attack with superiority / minority / goalkeeper out

	Attack				Reaction		
	Att.	Eff.	Shots	TF	FB	LD	Tot.
7 on 6 (GK out)	3	33%	1/2	1	0/0	0/0	0/0
6 on 6	42	50%	21/30	12			
7 on 5 (GK out)	1	100%	1/1	0	0/0	0/0	0/0
6 on 5 (GK out)	1	0%	0/0	1	0/0	0/0	0/0
6 on 5	8	50%	4/6	2			

Player superiority / GK out counted at the end of attack (in case it changes during attack)

### Defense with superiority / minority / goalkeeper out

	Attack				Reaction		
	Att.	Eff.	Shots	TF	FB	LD	Tot.
7 on 6 (GK out)	4	75%	3/3	1	0/0	0/0	0/0
6 on 6 (GK out)	6	83%	5/5	1	0/0	0/0	0/0
6 on 5 (GK out)	2	50%	1/1	1	0/0	0/0	0/0
6 on 6	42	43%	18/31	11			
5 on 6	1	0%	0/1	0			
5 on 5	1	0%	0/0	1			

Numbers show attacking numbers of opponent. Lower efficiency of opponent means better defense of this team

# Jersey number Tot. Total shooting 6m 6m (line) shooting 9m 9m shooting Wng Wing shooting FB Fastbreak sh. 7m 7m penalty sh.  
Brk. Breakthrough sh. LD Long distance sh. As. Assists PC Pass clear chance E7 Earned 7m pen. TF Technical faults St. Steals  
2m 2m punishments C7. Committed 7m E2 Earned 2m pun. YC. Yellow cards R/B Red/Blue cards Blk. Blocks S Starting Line-up



# Liga Florilor MOL 24-25



14. round

## Match Team Statistics

## CSM Corona Brasov 27 - 27 CS Minaur Baia Ma

19.1.2025. 17:30

Match No.

(15 - 11) (12 - 16)

Attendance: 1000

Sala Sporturilor Dumitru

Popescu Colibasi

Referees: Mihai Parvu (ROU) / Radu Mihai Potirniche (ROU)

### Shot distribution by player

<b>2 M. Ianasi</b>	<b>6 E. Galinska</b>	<b>7 A. Vukajlovic</b>	<b>8 T. Damian</b>	<b>10 J. Quintino Ribeiro</b>	<b>13 M. Gomes Da Costa</b>	<b>15 D. Romaniuc</b>
				1/1		
		0/1	1/1	1/1	1/1	
				2 post 1 miss.		1/1 lob
<b>21 F. Woller</b>	<b>22 L. Popescu</b>	<b>28 M. Cazanga</b>	<b>33 A. Lundback</b>	<b>37 A. Tatar</b>	<b>93 A. Spugnini Santome</b>	<b>95 K. Pavlovic</b>
		0/1	1/1	1/1	1/1	
1/2		0/1			1/1	0/1
2/2		2/2	2/2	1/1	1/1	
		2 post 1 miss.	1 miss.	1 miss.	4/5	

### TOTAL

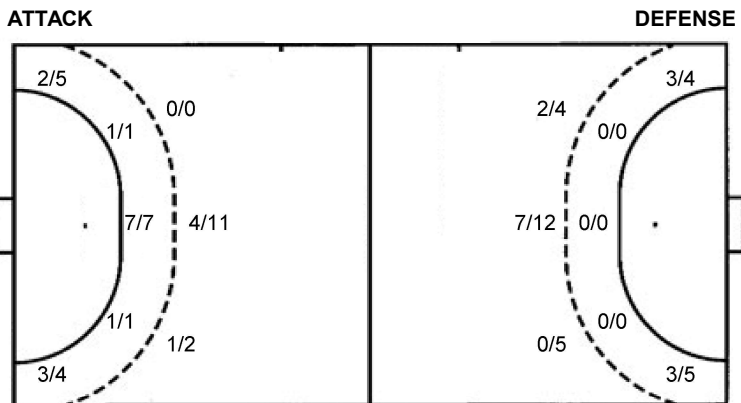
3/3		1/3
1/1		1/4
8/9	2/2	10/12

4 post 4 miss. 1/1 lob

### Saves distribution goalkeepers

<b>1 C. Mihis</b>	<b>53 Y. Dumanska</b>	<b>TOTAL</b>
0/2	0/1	0/3
2/2	1/2	1/2
	1/1	0/1
0/3		3/5
	0/3	1/1
	1/1	1/1
	1/9	2/11
		1/1
		1/12

### Shots by position



7m penalties	2/4	7m penalties	2/2
Fastbreak	2/2	Fastbreak	4/4
Breakthrough	4/5	Breakthrough	6/8
Long dist.	0/1	Long dist.	0/0

### Shooting statistics

Position	Goals	Sav.	Miss.	Post	Blk.	Total	%
Back (9m)	5	4	2	2	0	13	38
Line (6m)	9	0	0	0	0	9	100
Wing	5	2	1	1	0	9	56
7m penalties	2	1	0	1	0	4	50
Fastbreak	2	0	0	0	0	2	100
Breakthrough	4	1	0	0	0	5	80
<b>Total</b>	<b>27</b>	<b>8</b>	<b>3</b>	<b>4</b>	<b>0</b>	<b>42</b>	<b>64</b>

# Jersey number Tot. Total shooting 6m 6m (line) shooting 9m 9m shooting Wng Wing shooting FB Fastbreak sh. 7m 7m penalty sh.  
 Brk. Breakthrough sh. LD Long distance sh. As. Assists PC Pass clear chance E7 Earned 7m pen. TF Technical faults St. Steals  
 2m 2m punishments C7. Committed 7m E2 Earned 2m pun. YC. Yellow cards R/B Red/Blue cards Blk. Blocks S Starting Line-up

Handball statistics and livescore by Toma-soft ltd (www.toma-soft.hr)

