



# Liga Florilor MOL 24-25



21. round

Match Team Statistics

**CS Minaur Baia Mare 23 - 26 CS Rapid Bucures**

3.4.2025. 18:00

Match No.

(12 - 12) (11 - 14)

Attendance: 800

Sala Sporturilor Lascar Pana

Referees: Mihai Parvu (ROU) / Radu Mihai Potirniche (ROU)

## CS Minaur Baia Mare

#	Surname and name	S	Goals / shots									Attack					Def.			Penalties				TP				
			Tot.	%	9m	6m	Wing	7m	FB	Brk.	LD	As.	PC	E7	E2	TF	St.	C7	Blk	YC	2m	R	B					
1	MIHIS Cristina																											0:18
2	IANASI Maria-Andreea																											2:46
6	GALINSKA Emilia Anna		0/2	0	0/2																							5:02
7	VUKAJLOVIC Aleksandra	S	1/4	25	0/1																							36:32
8	DAMIAN Teodora Lavinia	S	2/4	50	1/3																							39:57
10	QUINTINO RIBEIRO Jessica	S	1/3	33		0/1	1/2																					57:39
13	GOMES DA COSTA Maria		1/1	100																								14:51
15	ROMANIUC Denisa Roxana																											
17	LAZEA Dina Florina																											
21	WOLLER Fie	S	5/6	83			3/4	2/2																				49:07
22	POPESCU Luciana-Andreea																											27:38
23	PAPP Nikoletta		0/1	0	0/1																							33:20
28	CAZANGA Magda-Alfredo		6/12	50	4/9																							
37	TATAR Andrijana		2/3	67		2/3																						
53	DUMANSKA Yuliya		1/1	100																								
93	SPUGNINI SANTOME Alba Chiara		4/5	80		4/4																						
	Team / bench																											
	<b>TOTAL</b>		<b>23/42</b>	<b>55</b>	<b>5/16</b>	<b>6/8</b>	<b>4/6</b>	<b>2/2</b>	<b>0/0</b>	<b>5/8</b>	<b>1/2</b>	<b>3</b>	<b>1</b>	<b>2</b>	<b>2</b>	<b>17</b>	<b>3</b>	<b>6</b>	<b>4</b>	<b>0</b>	<b>2</b>	<b>0</b>	<b>0</b>	<b>0</b>	<b>0</b>	<b>0</b>	<b>0</b>	

#	Surname and name	Saves / shots								
		Tot.	%	9m	6m	Wing	7m	FB	Brk.	LD
1	MIHIS Cristina	0/2	0				0/2			
53	DUMANSKA Yuliya	14/38	37	8/13	0/2	2/6	0/4	1/5	3/8	
	<b>TOTAL</b>	<b>14/40</b>	<b>35</b>	<b>8/13</b>	<b>0/2</b>	<b>2/6</b>	<b>0/6</b>	<b>1/5</b>	<b>3/8</b>	<b>0/0</b>

Coach: **Andrei Popescu**

Number of attacks: 55, Efficiency: 42%, Average Duration: 34.16 seconds

### Attack by type of defense

	Shots	9m	6m	Wing	TF	E7	E2
<b>On def. 6-0</b>	20/38	5/16	6/8	4/6	17	2	2
<b>Fastbreak</b>	0/0				0	0	0

### Defense by type

	Total	9m	6m	Wing	Stl.	C7	2m
<b>Def. 6-0</b>	16/37	5/20	2/2	4/7	3	6	2
<b>Fastbreak</b>	4/5				0	0	0

### Attack with superiority / minority / goalkeeper out

	Attack				Reaction		
	Att.	Eff.	Shots	TF	FB	LD	Tot.
<b>7 on 6 (GK out)</b>	3	33%	1/2	1	1/1	0/0	1/1
<b>6 on 6 (GK out)</b>	3	33%	1/1	2	0/0	0/0	0/0
<b>6 on 6</b>	43	42%	18/31	12			
<b>6 on 5</b>	3	33%	1/1	2			
<b>6 on 4</b>	3	67%	2/3	0			

Player superiority / GK out counted at the end of attack (in case it changes during attack)

### Defense with superiority / minority / goalkeeper out

	Attack				Reaction		
	Att.	Eff.	Shots	TF	FB	LD	Tot.
<b>7 on 6 (GK out)</b>	1	100%	1/1	0	0/0	0/0	0/0
<b>6 on 6 (GK out)</b>	1	100%	1/1	0	0/0	0/0	0/0
<b>5 on 6 (GK out)</b>	1	0%	0/1	0	0/0	1/1	1/1
<b>6 on 6</b>	47	49%	23/38	9			
<b>4 on 6</b>	1	0%	0/0	1			
<b>6 on 5 (GK out)</b>	1	100%	1/1	0	0/0	0/0	0/0
<b>6 on 5</b>	1	0%	0/0	1			

Numbers show attacking numbers of opponent. Lower efficiency of opponent means better defense of this team

# Jersey number Tot. Total shooting 6m 6m (line) shooting 9m 9m shooting Wng Wing shooting FB Fastbreak sh. 7m 7m penalty sh.  
 Brk. Breakthrough sh. LD Long distance sh. As. Assists PC Pass clear chance E7 Earned 7m pen. TF Technical faults St. Steals  
 2m 2m punishments C7. Committed 7m E2 Earned 2m pun. YC. Yellow cards R/B Red/Blue cards Blk. Blocks S Starting Line-up



# Liga Florilor MOL 24-25



21. round

## Match Team Statistics

## CS Minaur Baia Mare 23 - 26 CS Rapid Bucures

3.4.2025. 18:00

Match No.

(12 - 12) (11 - 14)

Attendance: 800

Sala Sporturilor Lascar Pana

Referees: Mihai Parvu (ROU) / Radu Mihai Potirniche (ROU)

### Shot distribution by player

<b>2 M. Ianasi</b> [Grid]	<b>6 E. Galinska</b> [Grid] 1 block	<b>7 A. Vukajlovic</b> [Grid] 1 block	<b>8 T. Damian</b> [Grid] 1 post	<b>10 J. Quintino Ribeiro</b> [Grid]	<b>13 M. Gomes Da Costa</b> [Grid]	<b>15 D. Romaniuc</b> [Grid]
<b>17 D. Lazea</b> [Grid]	<b>21 F. Woller</b> [Grid] 1 miss. 1/1 lob	<b>22 L. Popescu</b> [Grid]	<b>23 N. Papp</b> [Grid]	<b>28 M. Cazanga</b> [Grid] 2 miss. 1 block	<b>37 A. Tatar</b> [Grid] 1 miss. 1/1 lob	<b>93 A. Spugnini Santome</b> [Grid]

### TOTAL

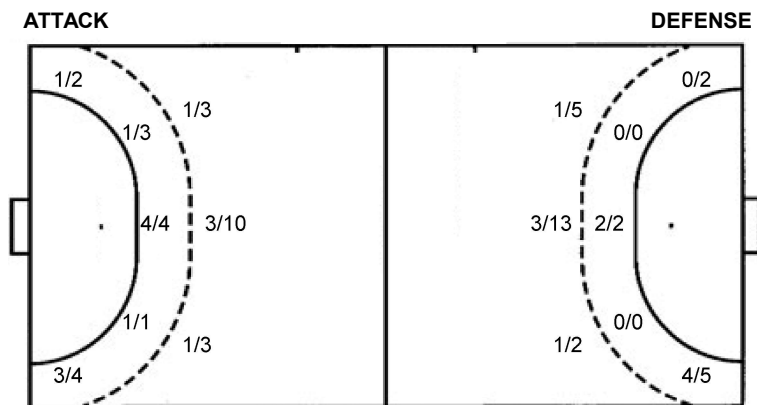
3/5	0/1	6/11
1/2		3/3
2/3	1/2	4/4

1 post 4 miss. 3 block 2/2 lob

### Saves distribution goalkeepers

<b>1 C. Mihis</b> [Grid]	<b>53 Y. Dumanska</b> [Grid]	<b>TOTAL</b> [Grid]
-----------------------------	---------------------------------	------------------------

### Shots by position



7m penalties	2/2	7m penalties	6/6
Fastbreak	0/0	Fastbreak	4/5
Breakthrough	5/8	Breakthrough	5/8
Long dist.	1/2	Long dist.	0/0

### Shooting statistics

Position	Goals	Sav.	Miss.	Post	Blk.	Total	%
Back (9m)	5	6	1	1	3	16	31
Line (6m)	6	1	1	0	0	8	75
Wing	4	1	1	0	0	6	67
7m penalties	2	0	0	0	0	2	100
Fastbreak	0	0	0	0	0	0	0
Breakthrough	5	2	1	0	0	8	63
<b>Total</b>	<b>22</b>	<b>10</b>	<b>4</b>	<b>1</b>	<b>3</b>	<b>40</b>	<b>55</b>

# Jersey number Tot. Total shooting 6m 6m (line) shooting 9m 9m shooting Wng Wing shooting FB Fastbreak sh. 7m 7m penalty sh.  
 Brk. Breakthrough sh. LD Long distance sh. As. Assists PC Pass clear chance E7 Earned 7m pen. TF Technical faults St. Steals  
 2m 2m punishments C7. Committed 7m E2 Earned 2m pun. YC. Yellow cards R/B Red/Blue cards Blk. Blocks S Starting Line-up



# Liga Florilor MOL 24-25



21. round

Match Team Statistics

## CS Minaur Baia Mare 23 - 26 CS Rapid Bucures

3.4.2025. 18:00

Match No.

(12 - 12) (11 - 14)

Attendance: 800

Sala Sporturilor Lascar Pana

Referees: Mihai Parvu (ROU) / Radu Mihai Potirniche (ROU)

### CS Rapid Bucuresti

Players		Goals / shots									Attack				Def.		Penalties			TP				
#	Surname and name	S	Tot.	%	9m	6m	Wing	7m	FB	Brk.	LD	As.	PC	E7	E2	TF	St.	C7	Blk		YC	2m	R	B
2	GONZALEZ ORTEGA Lara		0/1	0	0/1							2				1	1							
3	GORSHKOVA Polina Petrovna		2/5	40			0/2		1/2	1/1						2	1							
7	BUCESCHI Eliza Iulia		0/5	0	0/4					0/1		1				1	1							
9	GEAMANU Rebeca																							
10	KASSOMA Albertina	S	2/2	100			2/2							2	1	1			2		1			49:54
12	CIUCA Diana-Cristiana																							18:55
16	SANDRU Denisa Stefania	S																						39:05
18	TULEA Gabriela																							
19	KOUYATE Aissatou		1/2	50	0/1					1/1		1		1			1				1			22:22
24	STOICA Angela Stefania		2/5	40	2/5									1		4								15:17
34	FERNANDEZ FRAGA Alicia		1/1	100					1/1															3:55
44	HERNANDEZ SERRADOR Ainhoa													1						1				9:32
79	POLMAN Estevana	S	4/8	50	2/5					2/3		1	1	1		1	1					1		43:04
88	JANJUSEVIC Andela	S	9/13	69	1/4			6/6	1/1	1/2				1		1								37:27
91	RISTOVSKA Sara	S	5/6	83			4/5		1/1										1					56:18
	Team / bench																							
	TOTAL		26/48	54	5/20	2/2	4/7	6/6	4/5	5/8	0/0	5	2	6	1	11	5	1	3	0	4	0	0	

Goalkeepers		Saves / shots								
#	Surname and name	Tot.	%	9m	6m	Wing	7m	FB	Brk.	LD
12	CIUCA Diana-Cristiana	4/12	33	2/4	0/4	1/2	0/1			1/1
16	SANDRU Denisa Stefania	7/21	33	4/7	1/3	0/3	0/1		2/7	
	TOTAL	11/33	33	6/11	1/7	1/5	0/2	1/0	2/7	1/1

Coach: David Ginesta Montes

Number of attacks: 53, Efficiency: 49%, Average Duration: 32.47 seconds

#### Attack by type of defense

	Shots	9m	6m	Wing	TF	E7	E2
On def. 6-0	16/37	5/20	2/2	4/7	11	6	1
Fastbreak	4/5				0	0	0

#### Defense by type

	Total	9m	6m	Wing	Stl.	C7	2m
Def. 6-0	20/38	5/16	6/8	4/6	5	1	4
Fastbreak	0/0				0	0	0

#### Attack with superiority / minority / goalkeeper out

	Attack				Reaction		
	Att.	Eff.	Shots	TF	FB	LD	Tot.
7 on 6 (GK out)	1	100%	1/1	0	0/0	0/0	0/0
6 on 6 (GK out)	1	100%	1/1	0	0/0	0/0	0/0
5 on 6 (GK out)	1	0%	0/1	0	0/0	1/1	1/1
6 on 6	47	49%	23/38	9			
4 on 6	1	0%	0/0	1			
6 on 5 (GK out)	1	100%	1/1	0	0/0	0/0	0/0
6 on 5	1	0%	0/0	1			

Player superiority / GK out counted at the end of attack (in case it changes during attack)

#### Defense with superiority / minority / goalkeeper out

	Attack				Reaction		
	Att.	Eff.	Shots	TF	FB	LD	Tot.
7 on 6 (GK out)	3	33%	1/2	1	1/1	0/0	1/1
6 on 6 (GK out)	3	33%	1/1	2	0/0	0/0	0/0
6 on 6	43	42%	18/31	12			
6 on 5	3	33%	1/1	2			
6 on 4	3	67%	2/3	0			

Numbers show attacking numbers of opponent. Lower efficiency of opponent means better defense of this team

# Jersey number Tot. Total shooting 6m 6m (line) shooting 9m 9m shooting Wng Wing shooting FB Fastbreak sh. 7m 7m penalty sh.  
 Brk. Breakthrough sh. LD Long distance sh. As. Assists PC Pass clear chance E7 Earned 7m pen. TF Technical faults St. Steals  
 2m 2m punishments C7. Committed 7m E2 Earned 2m pun. YC. Yellow cards R/B Red/Blue cards Blk. Blocks S Starting Line-up



# Liga Florilor MOL 24-25



21. round

Match Team Statistics

## CS Minaur Baia Mare 23 - 26 CS Rapid Bucures

3.4.2025. 18:00

Match No.

(12 - 12) (11 - 14)

Attendance: 800

Sala Sporturilor Lascar Pana

Referees: Mihai Parvu (ROU) / Radu Mihai Potirniche (ROU)

### Shot distribution by player

2 L. Gonzalez Ortega


1 miss.

3 P. Gorshkova

		0/1
1/2	1/1	

1 miss.

7 E. Buceschi

0/1		
	0/1	0/1

1 miss. 1 block

9 R. Geamanu


10 A. Kassoma

		1/1
		1/1

18 G. Tulea


19 A. Kouyate

0/1		
		1/1

24 A. Stoica

		1/1
		1/1

3 block

34 A. Fernandez Fraga

		1/1

44 A. Hernandez Serrador


79 E. Polman

0/1		
	0/1	
2/2		2/3

1 miss.

88 A. Janjusevic

3/4	1/1	
	0/1	1/2
3/4		1/1

91 S. Ristovska

		2/3
1/1		2/2

TOTAL

3/7	1/1	4/6
	0/2	3/4
7/9	1/2	7/9

4 miss. 4 block

### Saves distribution goalkeepers

12 D. Ciuca

2/3	1/1	1/5
0/1		0/2

16 D. Sandru

0/2		4/6
1/2		0/3
1/2	1/2	0/2

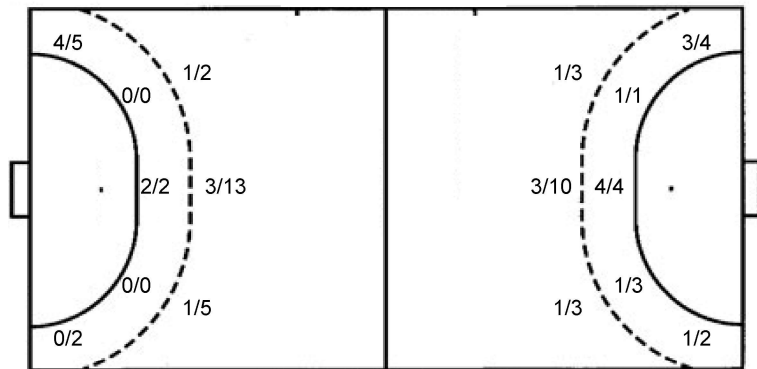
TOTAL

2/5	1/1	5/11
1/2		0/3
1/3	1/2	0/4

### Shots by position

ATTACK

DEFENSE



7m penalties 6/6  
Fastbreak 4/5  
Breakthrough 5/8  
Long dist. 0/0

7m penalties 2/2  
Fastbreak 0/0  
Breakthrough 5/8  
Long dist. 1/2

### Shooting statistics

Position	Goals	Sav.	Miss.	Post	Blk.	Total	%
Back (9m)	5	8	3	0	4	20	25
Line (6m)	2	0	0	0	0	2	100
Wing	4	2	1	0	0	7	57
7m penalties	6	0	0	0	0	6	100
Fastbreak	4	1	0	0	0	5	80
Breakthrough	5	3	0	0	0	8	63
<b>Total</b>	<b>26</b>	<b>14</b>	<b>4</b>	<b>0</b>	<b>4</b>	<b>48</b>	<b>54</b>

# Jersey number Tot. Total shooting 6m 6m (line) shooting 9m 9m shooting Wng Wing shooting FB Fastbreak sh. 7m 7m penalty sh.  
Brk. Breakthrough sh. LD Long distance sh. As. Assists PC Pass clear chance E7 Earned 7m pen. TF Technical faults St. Steals  
2m 2m punishments C7. Committed 7m E2 Earned 2m pun. YC. Yellow cards R/B Red/Blue cards Blk. Blocks S Starting Line-up

Handball statistics and livescore by Toma-soft ltd (www.toma-soft.hr)

